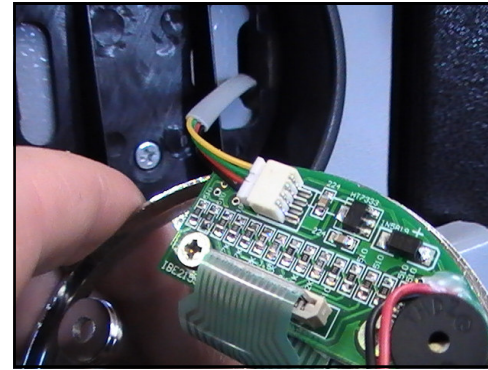


The **MSL-50** and **MSL-500** look identical but they do have different functions.

THE MSL-500



- MSL-500: when you press the star key twice, the orange light stays on for 5 seconds and you get 2 beeps.
- The MSL-500 has a small group of wires enclosed in a grey cover (four wires in the group) that go into the safe.



THE MSL-50



- MSL-50: when you press the star key once, you get 2 quick beeps with 2 quick orange flashes but the light does not stay on
- The MSL-50 has a wide group of wires that go into the safe.
- If you have the MSL-50, there should be a red reset button located inside your safe (used to change your code).

