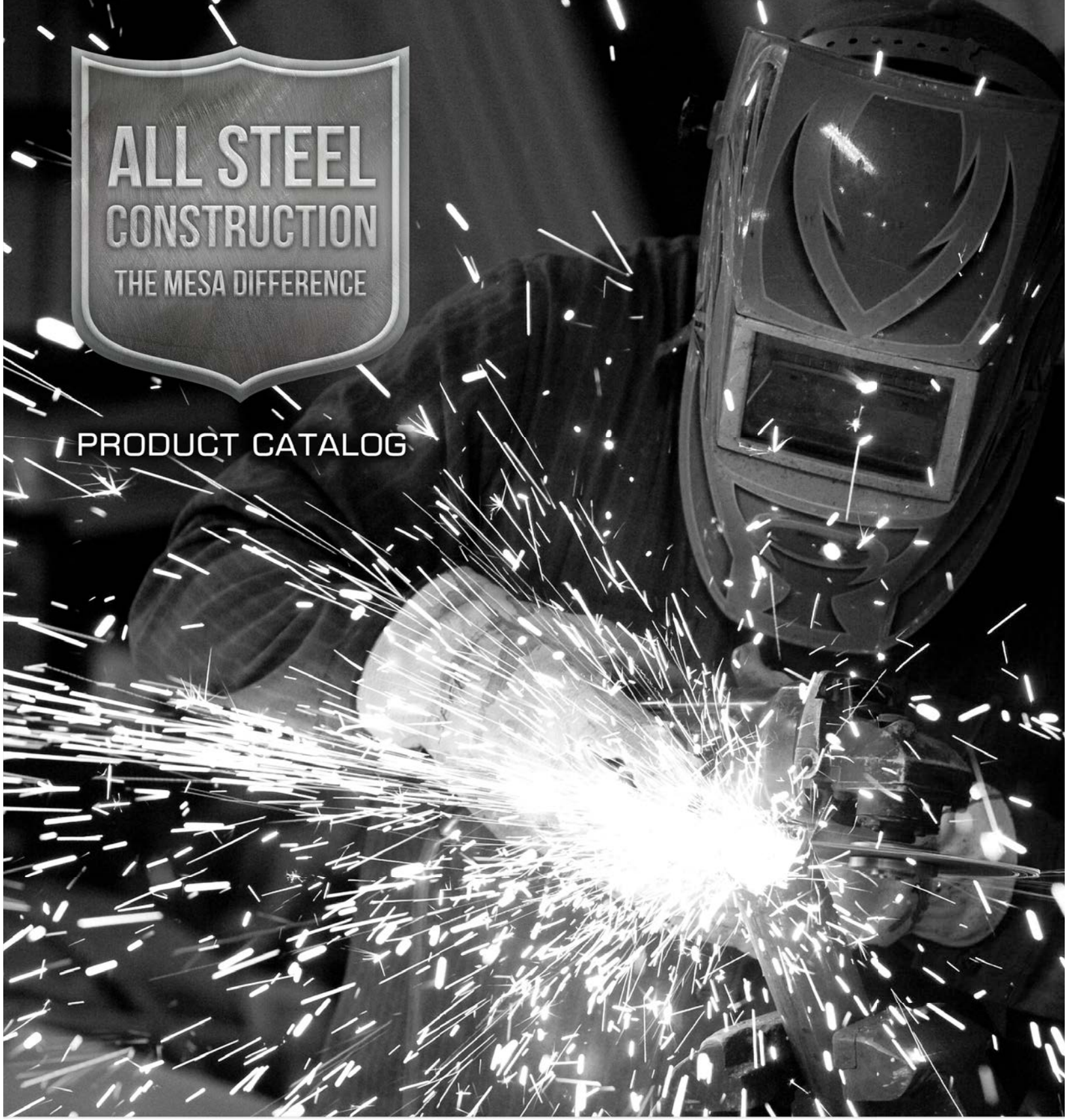


PRODUCT CATALOG

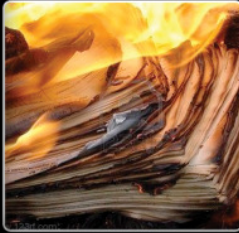


MESATM
SAFE COMPANY

*"Better Mesa Safe Than Sorry"*TM

MESA SAFE CO.

RAISING THE BAR



Mesa Safe Company has been a leader in the safe industry since 1981, taking pride in providing the world with high strength, quality safes.

Our company was founded, and is still currently operated, by George L. Vicente. He started working in this industry at the young age of sixteen when hired by a local locksmith; he has not left the industry since. After years of running locksmith calls and then starting his own locksmith company, he founded Mesa Safe Company.

With over 40 years experience in the safe industry, we bring you all steel safes designed by an individual that has been breaking into safes legally for most of his life. So do you think it would be easy to get into a Mesa Safe? Let us answer that question even though you may have already answered it, NO. All of our safes are all steel construction and use a high quality locking system.

After developing a wide variety of residential and commercial all steel constructed safes, we noticed that the cash management depository safe was not easily accessible to the small business owner without paying a small fortune. We made it our mission to make the depository safe easily accessible and affordable.

Through global resources, we have found a way to provide the public with high quality depository safes at a competitive price. This is how Mesa Safe Company became the first to introduce the depository safe to mass retailers.

But it didn't stop at the depository safe. Using the same resources, we have "Raised the Bar" on residential & commercial safes without raising the cost. All our safes are constructed with a professional grade security. We have also "Raised the Bar" on drop ship ordering with our white glove delivery. Not only is the safe delivered, we will bring the safe into your location, place the safe in the desired area, anchor the safe (depending on the model) to the ground, and remove and haul away the box and pallet.

We also have a very knowledgeable technical support team you can reach by phone or by e-mail, because we all know the world is not perfect.

LOOK FOR THESE ICONS WHEN CHOOSING A SAFE:



Solid Steel Construction
Offers burglary protection



Anti-fish Baffle
Helps prevent theft through deposit door/slot



Pre-drilled Anchor Holes
Secures your safe



Solid Steel Locking Bolts
Fights against pry attacks



Fire Protection
Factory tested



Punch Resistant
Lock protected by a reloading device



Drill Resistant
Lock protected by a hard plate



U.L. Listed Burglary Protection
Tool resistant



U.L. Classified Fire Protection
Class 350 - 1 hour



Impact Rated
Factory tested

Table of Contents:

Depository Safes	Pages 3-4
Designed for protection against robbery as well as internal theft, allowing quick deposits and secure storage for cash and miscellaneous valuables without actual access inside the safe.	
Undercounter Safes	Page 5
A business owner "must have," designed for protection against robbery as well as internal theft. Secure your cash, keys, receipts, deposit slips, and more.	
Mesa Fire Safes	Page 6
Unlike our competitors, Mesa fire safes are made of all steel construction. You can finally relax knowing you're not only protected from fires, but theft as well.	
2 Hour Fire Safes	Pages 7-8
Protects valuables from the effects of a fire or extreme heat. 2 hour fire rating, tested in temperatures up to 1830°F.	
U.L. Classified Fire Safes	Pages 9-10
Protects valuables from the effects of a fire or extreme heat. U.L. Classified fire resistant class 350 - 1 hour fire rating.	
Burglary and Fire Safes	Pages 11-12
Combines all the security features of a burglary safe and the peace of mind achieved with a fire safe. 2 hour fire rating, tested in temperatures up to 1830°F.	
Gun Safes	Pages 13-14
Protects firearms and other valuables combining all the security features of a burglar safe and the peace of mind of a fire safe.	
High Security Edition Burglary & Fire Safes	Pages 15-16
Protects weapons and other valuables combining all the security features of a burglar safe and the peace of mind of a fire safe.	
TL Safes	Pages 17-18
Able to withstand the attacks by the most sophisticated burglars, Mesa's TL safes not only offer the best security protection, but has a 2 hour, 350°F factory fire rating.	
Residential & Hotel Burglary Safe	Pages 19-20
Specially designed for personal in room use. It's compact and user friendly, making it an excellent choice for hotels, universities, hospitals and homeowners.	
Wall Safes	Page 21
Adjustable wall safe provides hidden protection for documents and miscellaneous valuables, also designed for easy installation.	
Hitch-Hiker Safe	Page 22
On-the-go protection at any location. Keep keys safe and never get locked out again. Perfect for hiking, surfing, rental car security and more.	

Mesa Safe Company reserves the right to incorporate any improvements and alter any specifications without prior notice. Mesa Safe Company reserves the right to update products as necessary, Mesa Safe Company is not responsible for typographical errors.



DEPOSITORY SAFES

DOOR & BODY

- 1/2" thick solid steel door
- Massive 1-1/2" diameter solid steel bolts
- Heavy-duty solid steel hinges
- Full length solid steel dead-bar
- 4 pre-drilled anchor holes (anchor kit included)

DEPOSIT DOOR

- Front loading mail box style deposit door accepts large deposits
- Anti-fish baffle helps prevent fishing through the deposit door

LOCK (ELECTRONIC & MECHANICAL)

- Lock protected by a drill resistant hard plate and a punch activated reloading system

LOCK OPTIONS

- Advanced Electronic Lock
- U.L. Listed Group 2 Combination Lock

ELECTRONIC LOCK

- Battery operated (battery included)
- Programmable 01-59 minute unlocking time-delay
- Optional two user code entry system
- 1 Manager code & 5 user codes
- Multiple invalid code defense feature
- Low battery warning

**Model MFL2714E-ILK comes equipped with a key locking interior locker that allows users access into the safe without having access to the deposits.*



MFL2014E



MFL2014E-OLK



MFL2714E-ILK



MFL2714E



MFL3020EE



MFL2731EE

Model No.	Exterior: H"W"D	Interior: H"W"D"	Interior Cu.Feet	Approx. Weight
MFL2014	20 3/4" x 14" x 14"	8 7/8" x 13 3/4" x 11"	0.8	82 lbs
MFL2714	27 1/4" x 14" x 14"	16 7/8" x 13 3/4" x 11"	1.4	110 lbs
MFL2714-ILK	27 1/4" x 14" x 14"	9 7/8" x 13 3/4" x 11" Inner Compartment: 5 7/8" x 13 3/4" x 9 7/8"	1.3	120 lbs
MFL2731	27 1/4" x 30 3/4" x 21"	L: 16 7/8" x 15 3/4" x 18" R: 27" x 14 1/2" x 18"	6.7	247 lbs
MFL3020	30" x 20" x 20"	T: 8 3/4" x 19 3/4" x 17 1/2" B: 10 1/4" x 19 3/4" x 17 1/2"	3.6	184 lbs
MFL2014E-OLK	27 1/4" x 14" x 14"	9" x 13 3/4" x 11" Outer Compartment: 6 7/8" x 13 3/4" x 13 3/8"	1.5	100 lbs

HOLDING CASH? YOU NEED ONE OF THESE.

Mesa's MFL series depository safes are designed for protection against robbery as well as internal theft, allowing quick deposits and secure storage for cash and miscellaneous valuables without actual access inside the safe: a necessity in every cash handling business.



AVAILABLE COLORS:



SECURITY FEATURES:



Owning a Mesa undercounter safe is a necessity when it comes to securing your business. Ideal for restaurants, convenience stores, bars, hotels, storefronts, and pawnshops. Perfect for storing cash, receipts, deposit slips, keys, and more.



UNDERCOUNTER SAFES

DOOR & BODY

- Solid steel construction
- 1/2" thick solid steel door
- Heavy duty dead bar
- 4 pre-drilled anchor holes
- Durable and attractive grey finish

DEPOSIT SLOT

- Front loading deposit slot
- Anti-fish baffle helps prevent fishing through the deposit slot

LOCK

- Dual key operated lock
- Lock protected by a spring loaded relocking system



Deposits can be made through the full width deposit slot.
Deposit slot dimensions: 5/8" x 5-1/2"

AVAILABLE COLORS:



- A. 1/2" thick solid steel door
- B. Dual key operated lock
- C. Anti-fish baffle prevents theft through the deposit slot
- D. Heavy-duty steel hinge

SECURITY FEATURES:



Model No.	Exterior: H"W"D"	Interior: H"W"D"	Interior Cu. Feet	Approx. Weight
MUC1K	12" x 6" x 8¾"	10½" x 5¾" x 6¼"	0.2	30 lbs
MUC2K	8" x 6" x 12¾"	6¼" x 5¾" x 10½"	0.2	30 lbs

NO PLASTIC. NO GIMMICKS. THAT'S THE MESA DIFFERENCE.

The value of a great fire safe won't fully be realized until it gets put to the test. Hopefully, that will never have to happen. At Mesa Safe, we never cut you short when it comes to protecting your valuables. Unlike our competitors, our line of fire safes contains no plastic used in the door, body & hinge construction, just quality all steel construction. Our all steel constructed safes offer real security against not only fires, but theft as well. This is the kind of help you can count on while you piece together everything else, the kind of help that doesn't melt away when times get tough. Quality is our top priority, no gimmicks allowed. That's the Mesa Difference.



MF53E

DOOR & BODY

- Door is 4" thick with enclosing fire resistant material
- Massive 1" diameter solid steel locking bolts
- Heavy-duty solid steel hinges
- Inner locking 3/4" x 3-1/2" diameter steel deadbolts
- 3 way locking system
- Body has 2-1/2" enclosing fire resistant material
- 2 story impact rating, factory tested
- One anchor hole (anchor kit included)
- High strength adjustable/removable shelves

LOCK FEATURES

- Concealed emergency key system
- External power pack
- Large easy to read illuminated display
- Multiple invalid code defense feature
- Battery operated (Batteries included)



FIRE

- U.L. Classified
- Class 350 - 1 hour fire rating



Motion sensed LED lighting system included. Requires 2 AA batteries.

Model No.	Exterior: H"W"D"	Interior: H"W"D"	Interior Cu. Feet	Approx. Weight
MF53E	20 7/8" x 18 7/8" x 18 7/8"	12 7/8" x 12 1/4" x 12 7/8"	1.3	165 lbs.

AVAILABLE COLORS:



SECURITY FEATURES:





2 HOUR FIRE SAFES

DOOR & BODY

- Door has an overall thickness of 4" enclosing fire resistant material
- Massive 1" diameter solid steel locking bolts
- Heavy-duty solid steel hinges
- Inner locking 1" diameter steel deadbolts
- 3 way locking system
- Body has an overall thickness of 3-1/2" enclosing fire resistant material
- 3 story impact rating
- High strength adjustable/removable shelves

FIRE

- 2 hour 350°F fire rating, tested in temperatures up to 1830°F

FEATURES

- Interior key locking drawer
- Exterior key lock allows you to lock the handle disabling user entry into the safe
- Safe model MFS170DD is designed to accommodate oversize and bulk storage. Also equipped with 2 interior key locking drawers

LOCK OPTIONS

- Electronic Lock
- Group 2 Combination Lock

ELECTRONIC LOCK

- 1 Manager code & 4 user codes available
- Multiple invalid code defense feature
- Easily change your personal code
- Battery operated (batteries included)



MFS100E



MFS120E



MFS140E



MFS160E



MFS170E



MFS170DDE

**CERTIFIED
FIRE
PROTECTION**

2 Hour Fire Rating Factory tested with max internal temperature reaching 350°F. Impact rating, immediately after the heating test the safe was dropped from a height of 30 feet and then reheated for another 45 minutes.

Model No.	Exterior: H"W"D"	Interior: H"W"D"	Interior Cu. Feet	Approx. Weight
MFS100	39½" x 23¾" x 21"	25½" x 17½" x 14"	3.6	440 lbs
MFS120	47½" x 27¾" x 25"	31½" x 20¾" x 18"	6.8	615 lbs
MFS140	55½" x 27¾" x 25"	39½" x 20¾" x 18"	8.3	700 lbs
MFS160	63" x 31½" x 25"	47¼" x 24¾" x 18"	12.2	910 lbs
MFS170	67" x 31½" x 25"	51½" x 24¾" x 18"	13.3	920 lbs
MFS170DD	67½" x 45¾" x 25"	51½" x 38½" x 18"	20.7	1275 lbs

BECAUSE SOME THINGS CAN'T BE REPLACED.

Not only should homeowners protect themselves from fire, but businesses as well. Last year alone, approximately 2.4 billion dollars was lost in nonresidential building fires. Organizations should put the highest priority on physical protection of important documents with high levels of fire and security protection in fire resistant safes. Fire protection is key, but burglary protection is just as important. This is why Mesa fire safes are made with all steel construction. Unlike our competition, our safes are not plastic, and offers you and your business the protection it deserves.



MFS170DDE

AVAILABLE COLORS:



SECURITY FEATURES:





U.L. CLASSIFIED FIRE SAFES

DOOR & BODY

- Door has an overall thickness of 3-1/2" enclosing fire resistant material
- Massive 1" diameter solid steel locking bolts
- Heavy-duty solid steel hinges
- Inner locking 1" diameter steel deadbolts
- 3 way locking system
- Body has an overall thickness of 3" enclosing fire resistant material
- 3 story impact rating, factory tested
- Safe can be anchored (anchor kit included)
- High strength adjustable/removable shelves

MFS45E (DOOR & BODY)

- Door has an overall thickness of 2-3/4"
- 3/4" diameter solid steel locking bolts
- Heavy-duty solid steel hinges
- Inner locking 3/4" diameter steel deadbolts
- Body has an overall thickness of 2-3/8"
- 3 story impact rating, factory tested
- Safe can be anchored (anchor kit included)

FIRE

- U.L. Classified class 350 - 1 hour fire rating

FEATURES

- Safe model MFS80E equipped with an interior key locking drawer
- Safe model MFS80E equipped with removable casters

LOCK FEATURES

- Concealed emergency key system
- External power pack
- Large easy to read illuminated display
- Multiple invalid code defense feature
- Battery operated (Batteries included)



MFS45E



MFS55E



MFS80E



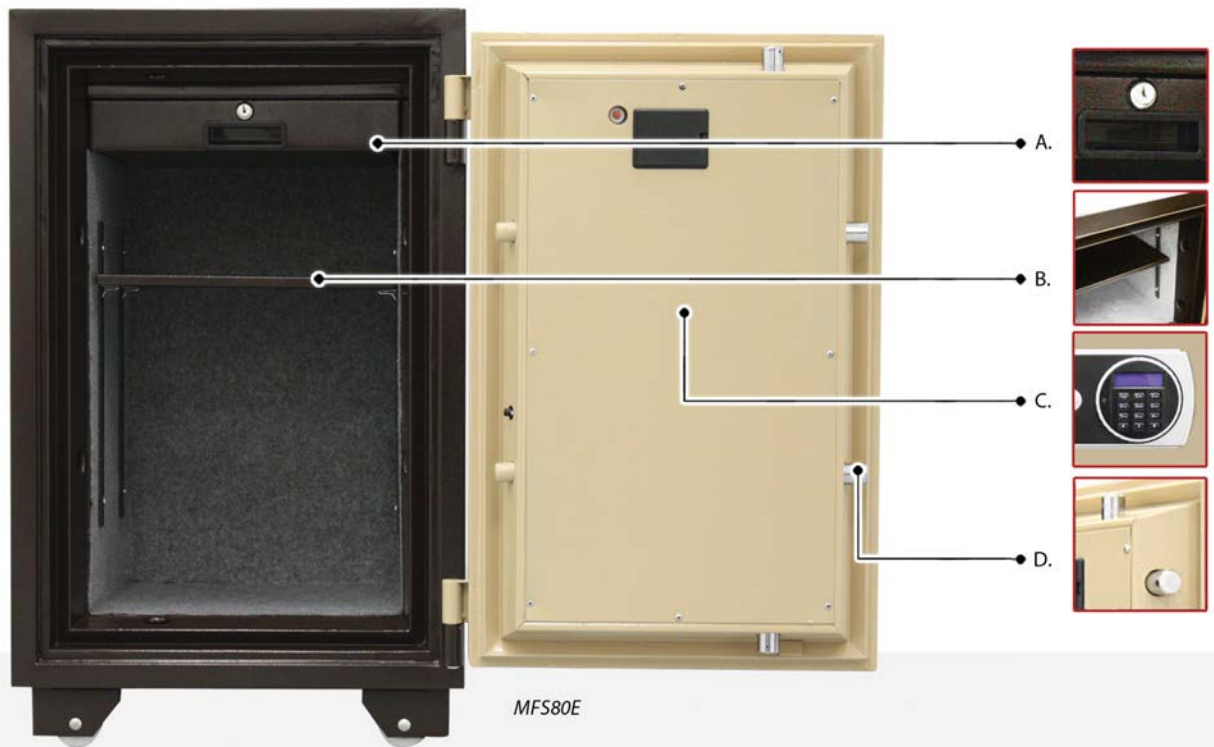
In Independent Underwriters Laboratory test, these Mesa fire safes were subject to fire for up to 1 hour. All documents inside the safe were left intact, and completely undamaged.

Model No.	Exterior: H"W"D"	Interior: H"W"D"	Interior Cu. Feet	Approx. Weight
MFS45E	17¼" x 14½" x 15¾"	10¾" x 9¾" x 10"	0.6	100 lbs
MFS55E	19½" x 21" x 20"	12¾" x 14¾" x 13¾"	1.5	205 lbs
MFS80E	34" x 21" x 20"	21¾" x 14¾" x 13¾"	2.4	300 lbs

YOUR VALUABLES DESERVE THE BEST.

Protect valuables from the effects of a fire or extreme heat. Keep your passport, birth certificate, deeds, insurance information or any other important documents and valuables safe, should the unthinkable happen.

Mesa's U.L. Classified Fire Safes offer the best protection available in today's market and give you the perfect amount of storage for your home or business needs. Fire protection is Key, but burglary protection is just as important. This is why Mesa Fire Safes are made with all steel construction, unlike the competition.



- A. Inner key locking drawer
- B. Heavy-duty steel shelf
- C. Electronic lock with illuminated LCD display
- D. 1" diameter live locking bolts

AVAILABLE COLORS:



SECURITY FEATURES:





BURGLARY & FIRE SAFES

DOOR & BODY

- Door has an overall thickness of 4" lined with a fire resistant material
- Massive 1" diameter solid steel bolts
- Heavy-duty solid steel hinges
- Body has an overall thickness of 1-1/4" which consists of a steel plate lined with a fire resistant material
- 2 story impact rating, factory tested
- 4 pre-drilled anchor holes (anchor kit included)
- High strength adjustable/removable shelves

FIRE

- 2 hour 350°F factory rating, tested in temperatures up to 1830°F
- Heat activated seal

LOCK (ELECTRONIC & MECHANICAL)

- Lock protected by a drill resistant hard plate and a punch activated relocking system

INTERIOR

- Fully upholstered shelves, walls and door panel

LOCK OPTIONS

- Electronic Lock
- U.L. Listed Group 2 Combination Lock

ELECTRONIC LOCK

- Battery operated (battery included)
- Low battery warning
- Multiple invalid code defense feature
- Easily change your personal code



MBF1512E



MBF2020E



MBF2620E



MBF3820E



Protect your firearms, photos, birth certificates, social security cards, and other valuables from thieves and fires.

Model No.	Exterior: H"W"D"	Interior: H"W"D"	Interior Cu. Feet	Approx. Weight
MBF1512	20" x 17¼" x 18¾"	16½" x 14½" x 13"	1.6	138 lbs
MBF2020	22½" x 22" x 22"	19¼" x 19" x 16"	3.4	200 lbs
MBF2620	26½" x 22" x 22"	23¼" x 19" x 16"	4.1	227 lbs
MBF3820	40" x 22" x 22"	36½" x 19" x 16"	6.4	297 lbs

NEVER SETTLE FOR LESS.

With so much on the line, why would you cheat yourself when it comes to safety? At Mesa Safe, we know you need the best protection available, that's why there is no shortage of features on our Burglary and Fire safe line. The MBF series not only protects your valuables and documents, but your handguns and firearms as well. From intruders to fires, this safe will be on guard 24/7 so that when the unthinkable happens, you're that much more prepared, and have that much more peace of mind.



MBF382CE

- A. Heavy-duty steel hinges
- B. Adjustable shelves
- C. 1" diameter steel deadbolts
- D. 1-1/4" Total Body Thickness

AVAILABLE COLORS:



Hammered
Grey

SECURITY FEATURES:



WWW.MESASAFE.COM



GUN SAFES

DOOR & BODY

- Door has an overall thickness of 4-3/8" lined with fire resistant material
- Massive 1-1/2" diameter solid steel bolts
- Heavy-duty solid steel hinges
- 3 way locking system
- Body has an overall thickness of 1-5/8" which consists of a steel plate lined with a fire resistant material
- 2 story impact rating, factory tested
- 4 pre-drilled anchor holes (anchor kit included)

FIRE

- 1 hour 350°F factory rating, tested in temperatures up to 1750°F
- Heat activated seal

LOCK (ELECTRONIC & MECHANICAL)

- Lock protected by a drill resistant hard plate and a punch activated reloading system

INTERIOR

- Fully upholstered shelves, walls and door panel
- Fully adjustable shelving system

LOCK OPTIONS

- Electronic Lock
- U.L. Listed Group 2 Combination Lock

ELECTRONIC LOCK

- Multiple invalid code defense feature
- 2 user codes available
- Easily change your personal code
- Battery operated (battery included)
- Low battery warning



MBF5922E



MBF6030E



MBF6032E



MBF7236E

Model No.	Exterior: H"W"D"	Interior: H"W"D"	Interior Cu. Feet	Approx. Weight
MBF5922	59" x 22" x 20"	55½" x 18¾" x 13¾"	7.9	502 lbs
MBF6030	59" x 30" x 21"	55½" x 28½" x 14¾"	13	625 lbs
MBF6032	59" x 32" x 22"	55½" x 28½" x 15¾"	14.4	668 lbs
MBF7236	71" x 36" x 24"	67½" x 32½" x 18"	22.9	860 lbs

KEEP YOUR GUNS IN THE RIGHT HANDS.

Guns can be a dangerous business. Without the proper training and care they can be lethal. Now more than ever it is important to take the proper safety measures to ensure the safety of yourself and others around you while using and storing firearms. According to a 2005 Gallup Poll, 42% of households in America owned a firearm. Of those households, one out of every three handguns is kept loaded and unlocked in the home.

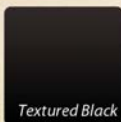
With so much at stake, the obvious choice is the right choice; made with all steel construction, the Mesa Gun Safe line will protect your guns, and keep accidents from terrorizing your life.



OPTIONAL: ALL SHELF SETUP AVAILABLE
Interior shelving can be adjusted or removed to meet your unique storage needs.

- A. 4-3/8" steel door enclosing a fire resistant material
- B. Five 1-1/2" Diameter steel dead bolts
- C. Reset button makes changing your code simple
- D. Nine to seven 1-1/2" Diameter solid steel locking bolts

AVAILABLE COLORS:



SECURITY FEATURES:





HIGH SECURITY SAFES

DOOR & BODY

- Door has an overall thickness of 4-7/8" enclosing burglary & fire resistant material
- Massive 1-1/4" diameter solid steel locking bolts
- Heavy-duty solid steel hinges
- Inner locking steel deadbolts
- Body has an overall thickness of 2-5/8" enclosing burglary & fire resistant material
- 2 story impact rating, factory tested
- 1 pre-drilled anchor hole (anchor kit included)
- High strength adjustable/removable shelves

FIRE

- 2 hour 350°F factory rating, tested in temperatures up to 1830°F
- Heat activated seal

LOCK (ELECTRONIC & MECHANICAL)

- Lock protected by a drill resistant hard plate and a punch activated relocking system

LOCK OPTIONS

- Electronic Lock
- U.L. Listed Group 2 Combination Lock

ELECTRONIC LOCK

- Battery operated (battery included)
- Multiple invalid code defense feature
- 2 user codes available
- Easily change your personal code
- Low battery warning



MSC1916E



MSC2120E



MSC2520E

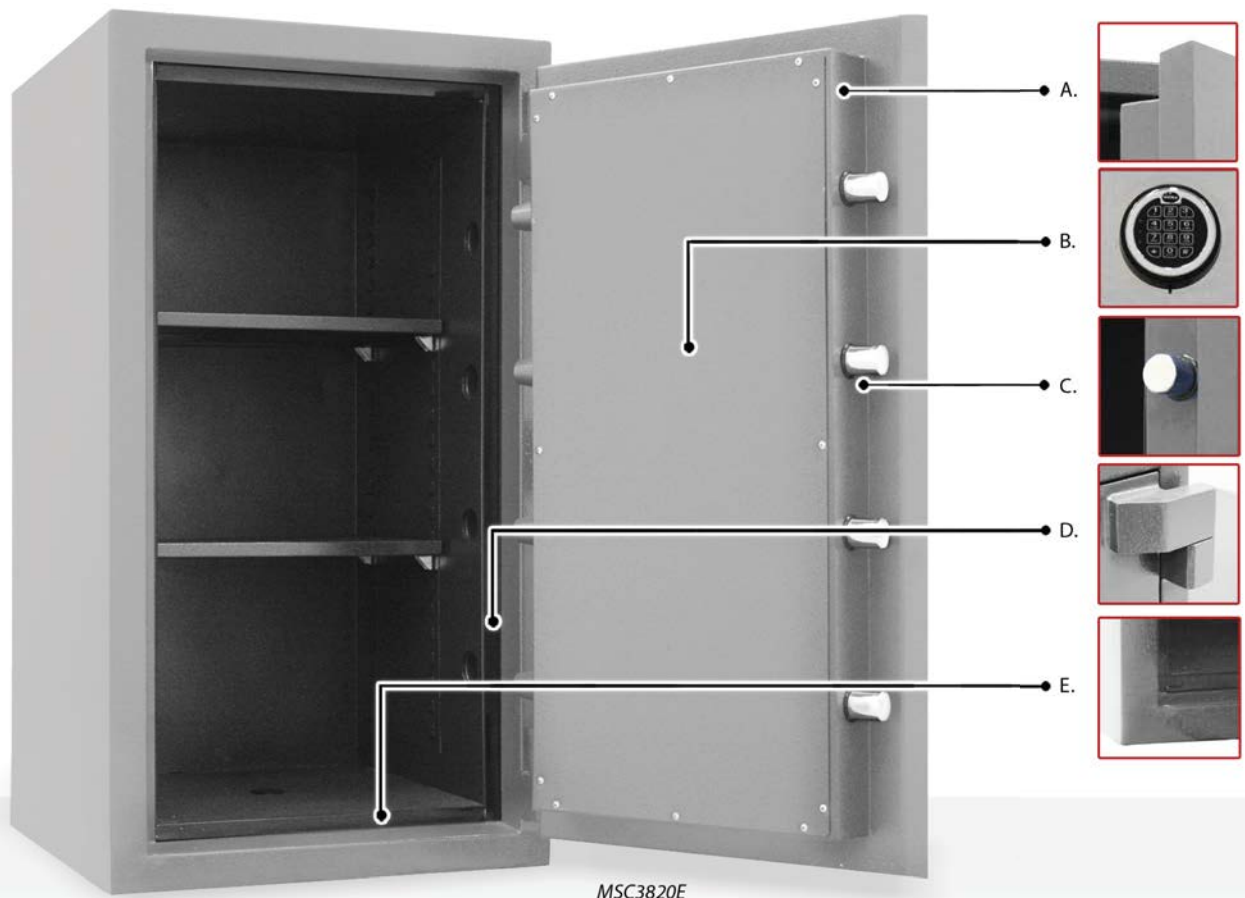


MSC3820E

Model No.	Exterior: H"W"D"	Interior: H"W"D"	Interior Cu. Feet	Approx. Weight
MSC1916	20¾" x 18" x 19"	15" x 12" x 11"	1.1	386 lbs
MSC2120	22½" x 22" x 22"	17" x 16" x 14"	2.2	527 lbs
MSC2520	26½" x 22" x 22"	20½" x 16" x 14"	2.7	589 lbs
MSC3820	40" x 22" x 22"	34" x 16" x 14"	4.4	831 lbs

HIGH SECURITY MEETS AFFORDABLE.

If you are looking for the best safe available for your valuables, then the Mesa Safe high security edition burglary and fire safe should be one to consider. While these safes are used by many commercial applications, home owners who want "vault-like" security for their irreplaceable, choose one of these. The MSC Series headlines the entire high security safe industry.



- A. Overall door thickness of 4-7/8"
- B. Battery operated electronic lock
- C. 1-1/4" solid steel locking bolts
- D. Heavy duty steel hinges
- E. Fire activated door seal

AVAILABLE COLORS:



SECURITY FEATURES:





TL 15 & TL30 SAFES

DOOR

- Door constructed with a 2-3/4" defense barrier of outer and inner steel plates creating a single structure enclosing a unique, high density fire and burglary resistant composite material
- Defense barrier houses a proprietary amalgamation of nuggets and steel fibers to withstand concentrated attacks with the most sophisticated equipment used by burglars today
- Massive 1-1/2" diameter chrome plated solid steel locking bolts, each bolt moves deep into the body's protected bolt chambers
- Heavy-duty solid steel hinges
- The Mesa TL-30 offers a massive solid steel hard plate covering the entire door

BODY

- Formed body has a total protective thickness of 3-1/2" enclosing a high density fire resistant composite material with nuggets and steel fibers
- Reinforced drill resistant door frame protects the door and each individual bolt chamber from severe side attacks
- A proprietary inner barrier protects against peeling attacks
- High strength adjustable shelves

LOCK

- U.L. listed group 2 combination lock
- Lock is protected by a massive drill shattering hard plate and 2 punch activated reloading systems

FIRE

- 2 hour, 350°F factory fire rating
- Tested in temperatures up to 1850°F



MTLE1814



MTLF2518



MTLE4524



MTLF5524



MTLF6528



MTLE7236

Model No.	Exterior: H"W"D"	Interior: H"W"D"	Approx. Weight
MTLE1814	25" x 21" x 21½"	18" x 14" x 12"	710 lbs
MTLE2518	32" x 25" x 25½"	25" x 18" x 16"	1105 lbs
MTLE3524	42" x 31" x 29½"	35" x 24" x 20"	1674 lbs
MTLE4524	52" x 31" x 29½"	45" x 24" x 20"	2003 lbs
MTLE5524	62" x 31" x 29½"	55" x 24" x 20"	2343 lbs
MTLE6528	72" x 35" x 29½"	65" x 28" x 20"	3153 lbs
MTLE7236	79" x 43" x 32½"	72" x 36" x 23"	3880 lbs
MTLF1814	25" x 21" x 21½"	18" x 14" x 12"	725 lbs
MTLF2518	32" x 25" x 25½"	25" x 18" x 16"	1195 lbs
MTLF3524	42" x 31" x 29½"	35" x 24" x 20"	1908 lbs
MTLF4524	52" x 31" x 29½"	45" x 24" x 20"	2311 lbs
MTLF5524	62" x 31" x 29½"	55" x 24" x 20"	2679 lbs
MTLF6528	72" x 35" x 29½"	65" x 28" x 20"	3359 lbs
MTLF7236	79" x 43" x 32½"	72" x 36" x 23"	4426 lbs



Standard U.L. listed group 2 combination lock



Spy-proof U.L. listed group 2 combination lock

THE TOUGHEST IN THE BUSINESS.

During extreme testing procedures, Mesa TL Safe demonstrated the ability to withstand severe attacks by experienced U.L. experts using powerful tools such as sledgehammers, power saws, carbide disc cutters, drills, etc., and without fail, were awarded the U.L. TL-15 and TL-30 labels. Besides withstanding the most concentrated attacks by sophisticated burglars, each Mesa TL Safe offers a 2 hour, 350°F factory rating, ensuring the protection of the vault's contents against intense fires.



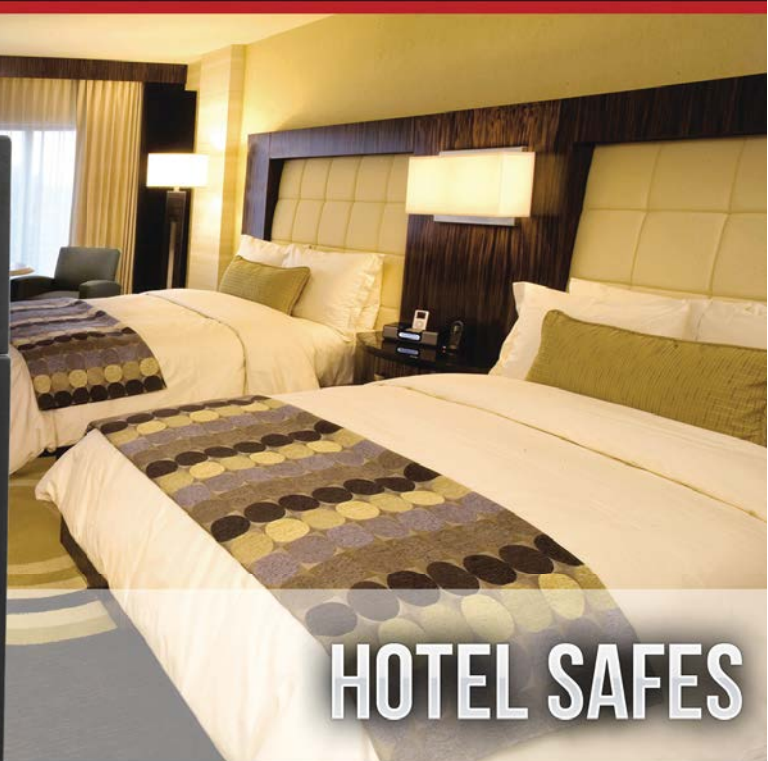
- A. Heavy-duty solid steel hinges
- B. High strength adjustable shelves
- C. Door constructed with a 2-3/4" defense barrier
- D. 1-1/2" chrome plated solid steel locking bolts

AVAILABLE COLORS:



SECURITY FEATURES:





HOTEL SAFES

DOOR & BODY

- All steel construction
- Concealed hinge helps prevent door removal
- Two 3/4" diameter solid steel locking bolts
- Recessed door helps fight against pry attacks
- Pre-drilled anchor holes provided (2 anchors included)

FEATURES

- Card swipe accepts almost any card with a magnetic strip. Examples: drivers license, credit card, club card, etc.
- Hotel function style locking system that manages itself
- Able to change locking system to standard mode for home or office use

ELECTRONIC LOCK

- Concealed emergency key system
- Multiple invalid code defense feature
- Hotel function style locking system
- Programmable standard style locking system
- Operate safe using the keypad or card swipe
- LED display shows you the status of your safe
- Battery operated (batteries included)

PEDESTAL (MP101 & MP916)

- Pre-drilled anchor holes provided to mount to the safe and floor
- Places the hotel safe 18" off the ground for convenient access

LOCKER (MH105D)

- 5 units in 1
- Each compartment has the interior dimensions of safe model MH101



MH101



MP101



MHRC916E-BLK



MP916

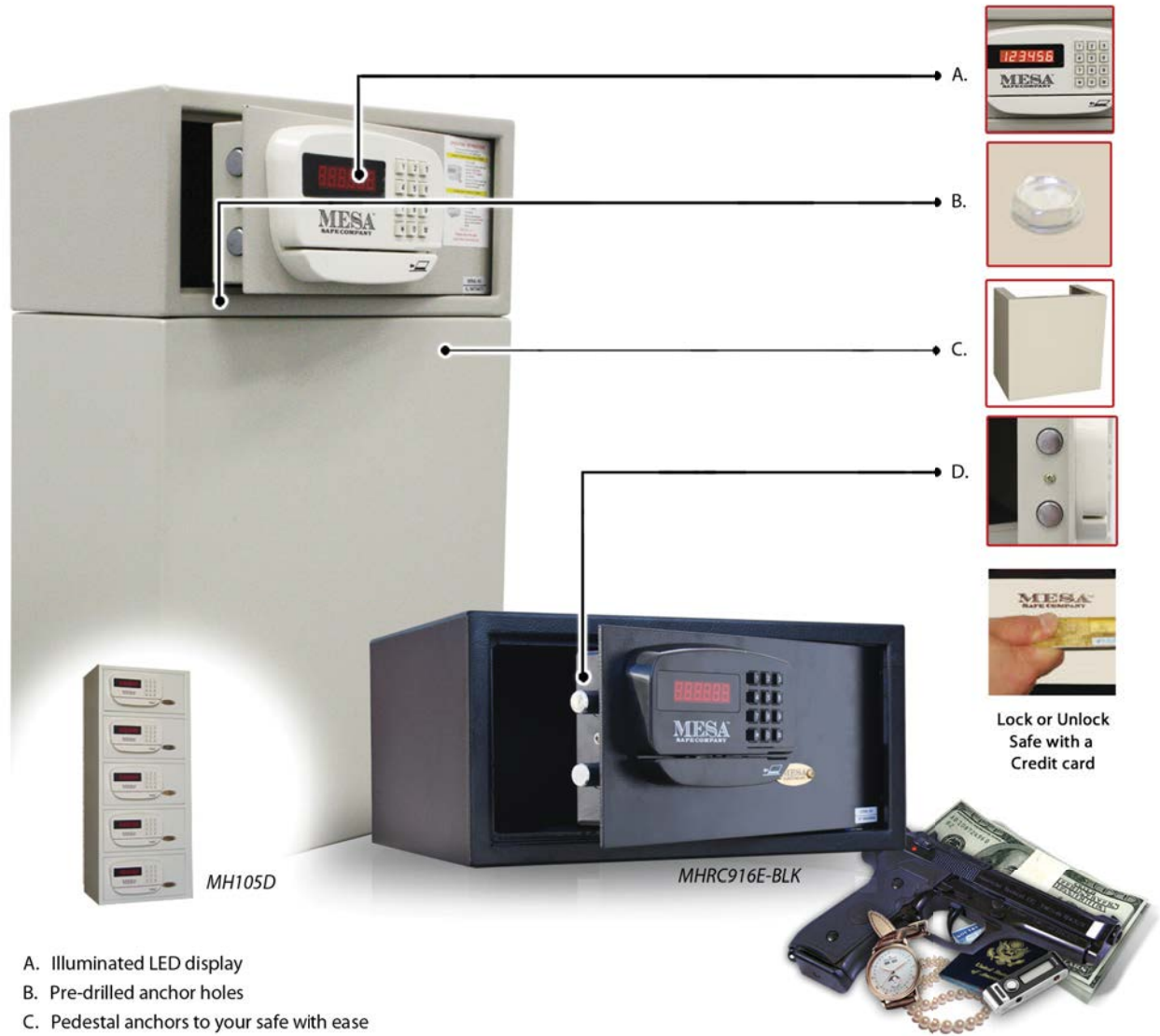


Models MH101 & MHRC916E come equipped with a concealed Mechanical Key Override System that allows instant access into the safe in case of an emergency.

Model No.	Exterior: H"W"D"	Interior: H"W"D"	Interior Cu. Feet	Approx. Weight
MHRC916E	9" x 18" x 15"	8 $\frac{1}{8}$ " x 17 $\frac{1}{4}$ " x 12 $\frac{1}{2}$ "	1.2	35 lbs
MH101	7" x 15" x 10"	6 $\frac{1}{8}$ " x 14 $\frac{1}{8}$ " x 7 $\frac{1}{4}$ "	0.4	25 lbs
MP916	18" x 18" x 15"	N/A	N/A	30 lbs
MP101	18" x 15" x 10"	N/A	N/A	25 lbs

YOU CAN FINALLY RELAX, YOUR VALUABLES ARE SECURE.

Sleek, compact, and easy-to-use, the Mesa MH Series Residential and Hotel Burglar Safes are specially designed for personal in room use. It's the perfect choice for hotels, universities, hospitals and homeowners. Choose your personal combination or lock and unlock using the card swipe reader. Always keep your passport, laptop, and media secure whether you're a hotel guest, resident, or student.



- A. Illuminated LED display
- B. Pre-drilled anchor holes
- C. Pedestal anchors to your safe with ease
- D. 3/4" diameter solid steel locking bolts

AVAILABLE COLORS:



SECURITY FEATURES:





SECURITY FEATURES:



WALL SAFES

DOOR & BODY

- Solid steel construction
- 1/4" thick solid steel door & flange
- Concealed hinges helps prevent door removal
- Two 3/4" diameter solid steel locking bolts
- Recessed door helps fight against pry attacks
- Pre-drilled anchor holes provided (4 anchors included)

FEATURES

- Adjustable depth gives you the ability to maximize your usable space
- Expandable shelf kit included
- Outer flange will cover up any imperfections made when cutting the wall opening
- Interior light
- Designed for easy installation

ELECTRONIC LOCK

- Concealed emergency key system
- Multiple invalid code defense feature
- Easily change your personal code
- Low battery warning
- Battery operated (batteries included)

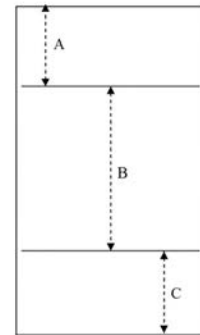
Model No.	MAWS2113E
Exterior: H"W"D	22 1/8" x 15" x 3 3/4" - 6"
Interior: H"W"D	19 1/2" x 12 1/4" x 2 1/2" - 4 3/4"
Interior Cu. Feet	0.3 - 0.7
Approx. Weight	42 lbs

AVAILABLE COLORS:



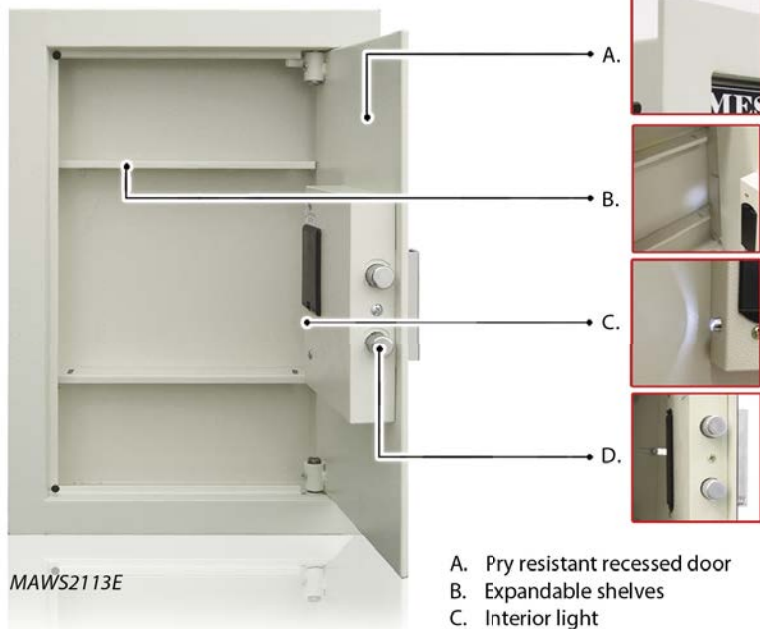
Adjustable Depth:

The telescoping back gives you the ability to maximize your usable space when installed in different wall thicknesses.



Shelves and Shelf Extensions:

Your wall safe comes with 2 fixed shelves and 2 sets of shelf extensions. Dimensions: a. 4-3/4" b. 8-7/8" c. 5"



- A. Pry resistant recessed door
- B. Expandable shelves
- C. Interior light
- D. Two solid steel locking bolts

ON-THE-GO PROTECTION AT ANY LOCATION. INTRODUCING THE HITCH-VAULT.

Finally, a place to store your keys and other valuables while you're out doing the things you love. The Hitch-Hiker is perfect for outdoor activities like hunting, surfing, camping, backpacking, hiking, mountain-biking, travel, rental car security and more. Don't risk getting your car broken into at the beach or losing your keys out on the trail. Get the protection you deserve, wherever you go.

DOOR & BODY

- Solid steel construction
- 1/4" thick solid steel door & body
- Pry-resistant recessed door
- Heavy-duty solid steel lid
- Drill & punch resistant hitch pins
- Concealed hinges
- Rugged and durable finish

FEATURES

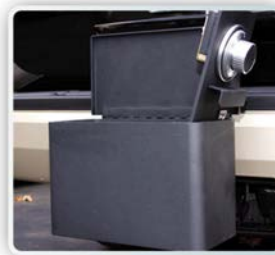
- Easily attaches to your hitch
- Secures to standard 2" hitch receivers
- Hitch pins can only be retracted from inside the safe
- Can be used as a step for roof cargo access

LOCK

- U.L. Listed group 2 combination lock
- Lock protected by a drill resistant hard plate and a punch activated reloading system



Warning for vehicles with back-up sensors: When attached, the Hitch-Hiker may affect the back-up sensor system. This depends on the the location of the hitch and sensors.



MODEL: MHK1

Exterior dimensions
H 8-1/8" W 12-1/2" D 6"
Depth with hitch 13"

Interior dimensions
H 5-3/8" W 11-1/2" D 5-1/2"
Approx weight: 45 lbs

AVAILABLE COLORS:



Textured Black

SECURITY FEATURES:



WWW.MESASAFE.COM



MESA SAFE COMPANY
ORANGE, CA 92865
P: 800.490.5624 | F: 714.627.4016
WWW.MESASAFE.COM

